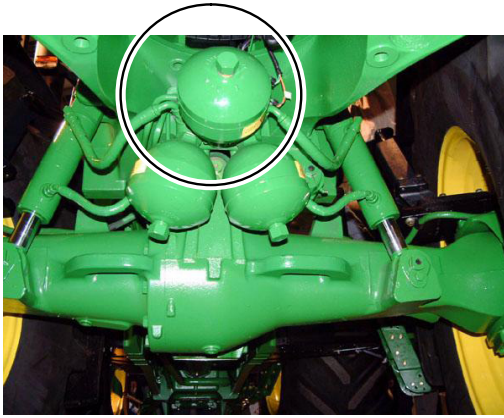


Ernst Degenhart GmbH
Gewerbestr. 2
87752 Holzgünz

Tel: 0049 (0)8393-92150
Fax: 0049 (0)8393-92160
info@degenhart-systeme.de
www.degenhart-systeme.de

Installation Instruction
for
John Deere 7020 series
20200510

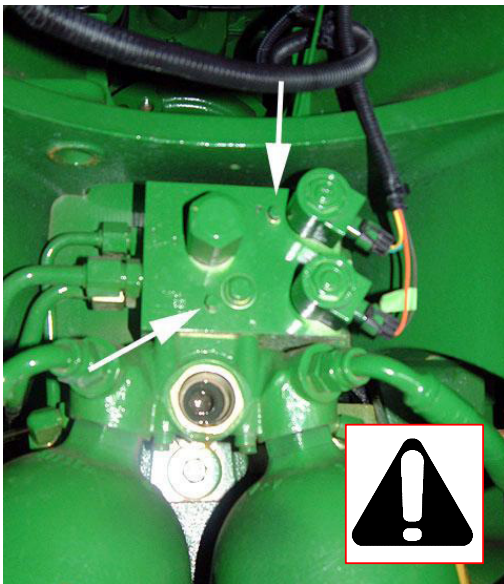




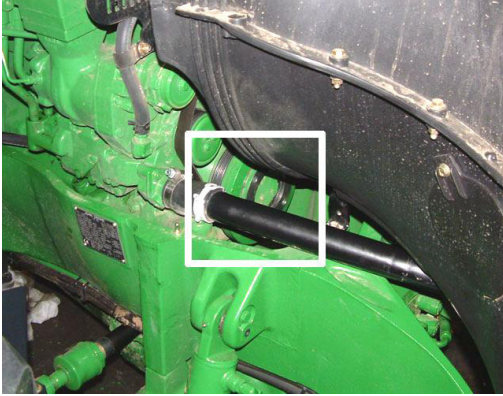
Dismount headlamp and basic weight. (Later on headlamp will be put on the front hitch.)

Dismount the upper membrane-accumulator. Both indicated bolts (arrow) need to be dismantled in order to reduce the pressure of the hydraulic systems.

Attention:
Accumulator is under hydraulic pressure!!!
Please follow the instructions of John Deere (shop manual)!



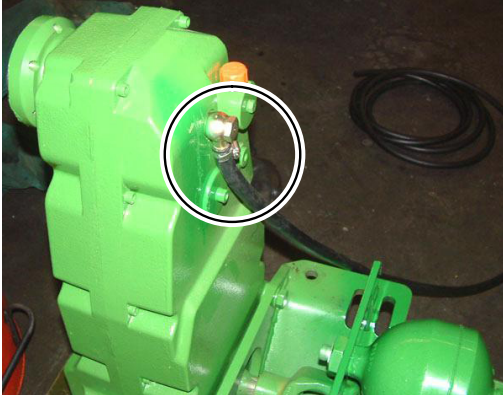
Mount the supplied thread-reducing fitting (arrow) (M30x1,5) at the position of the air vessel with membrane. Reuse the old joint ring of the accumulator. Fasten the screw (rotating joint).



Remove the paint on the contact area of the v-belt pulley.



Mount the membrane-accumulator at the provided mounting of the front PTO.

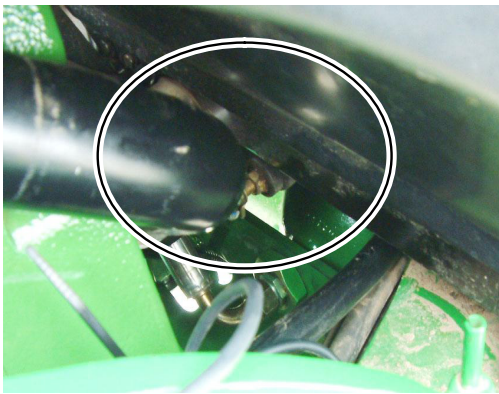
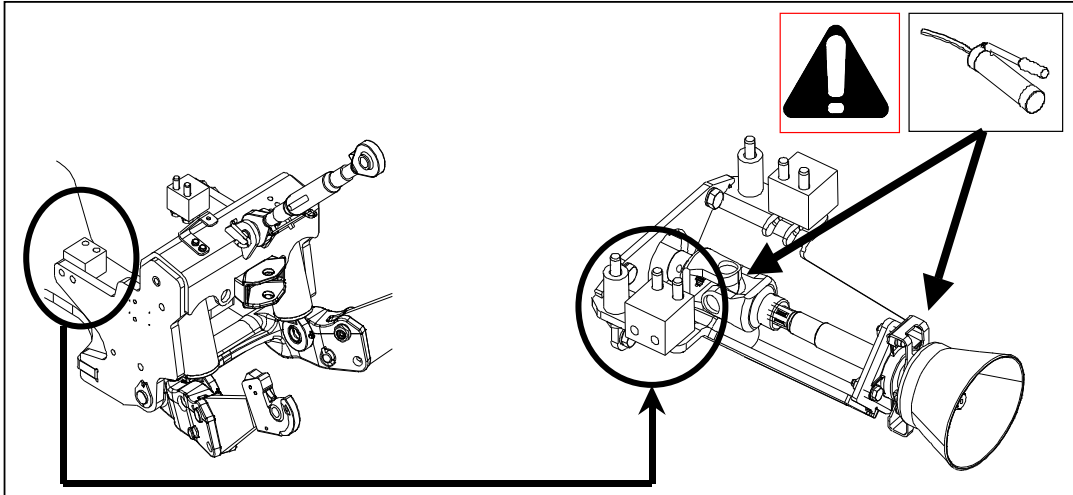


Mount the runback hose of the oil cooler to the PTO gear.
In doing so take off the plug and tighten the supplied screw with loop. Fix the hose with a hose clamp.



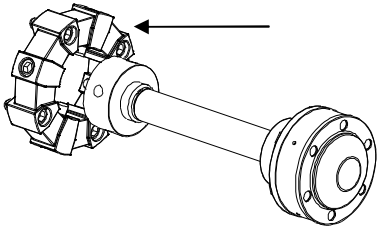
Lubricate the universal-joint shaft and the guide bearing of the drive shaft

Mount the front PTO with the two bushings and the assembly block of the front hitch (see picture below).
Tighten bolts M20 x 130 8.8 and washers with **410 Nm**.

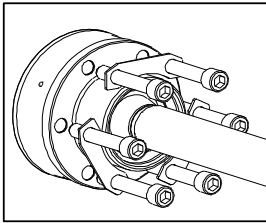


Mount the supplied hydraulic hose in between the membrane-accumulator at the front PTO and the original connection (rotating joint).

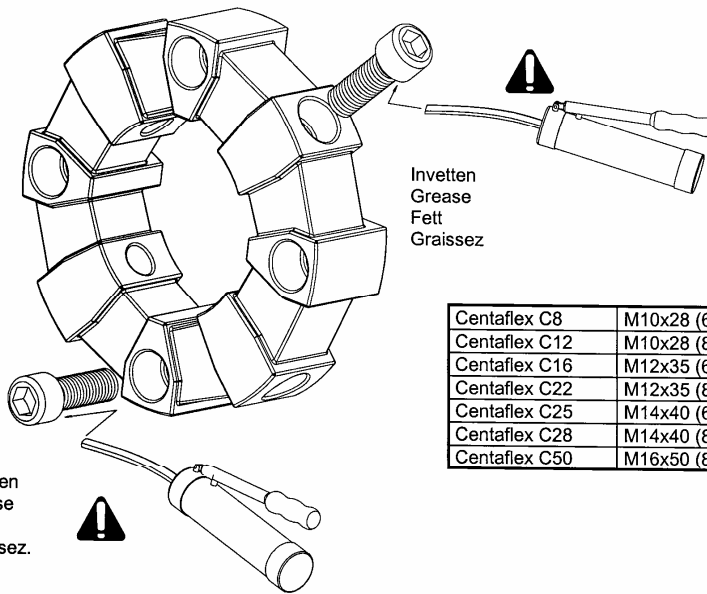




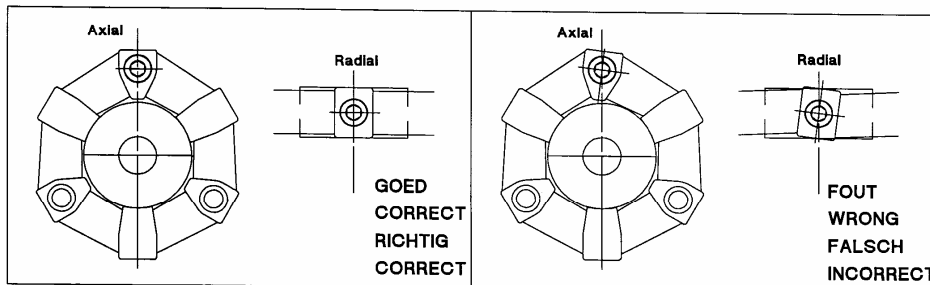
Attention:
Secure nuts with Loctite.
Tighten nuts with 145Nm!

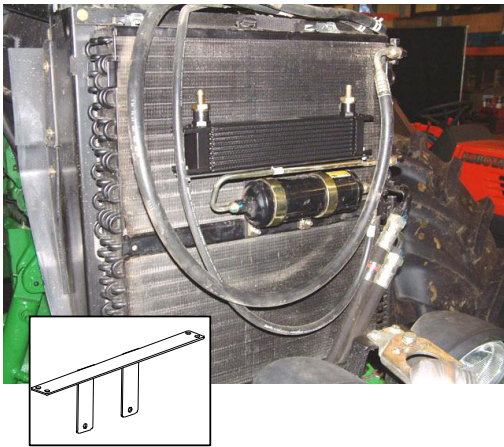


A fin de evitarlo se ha de lubricar la parte inferior de la cabeza del perno con **GRASA** para así reducir la fricción entre la cabeza del perno y la superficie de aluminio..

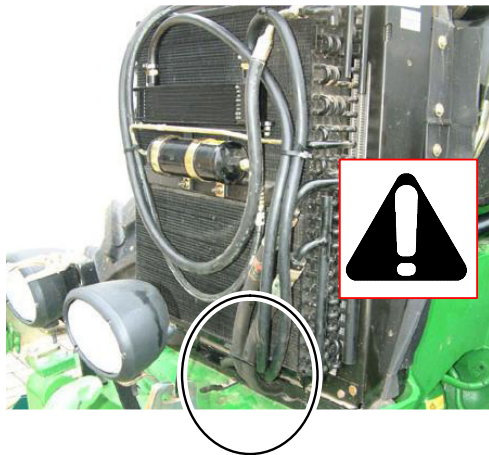


Centaflex C8	M10x28 (6x)	50 Nm
Centaflex C12	M10x28 (8x)	50 Nm
Centaflex C16	M12x35 (6x)	90 Nm
Centaflex C22	M12x35 (8x)	90 Nm
Centaflex C25	M14x40 (6x)	140 Nm
Centaflex C28	M14x40 (8x)	140 Nm
Centaflex C50	M16x50 (8x)	220 Nm

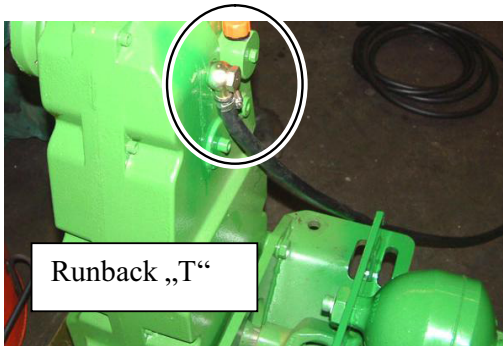




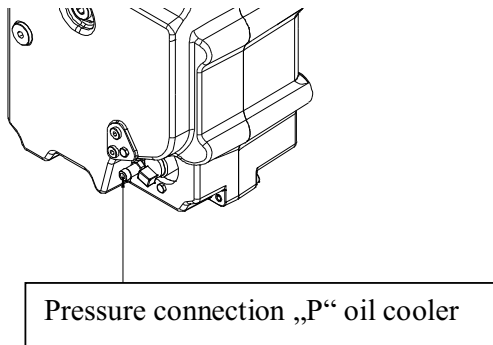
Mount the retainer of the oil cooler together with the dryer of the air conditioner in front of the JD-radiator package.
Hose connections at the oil cooler pointing upwards.



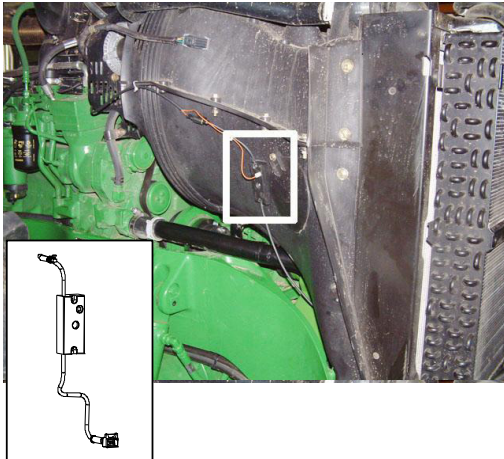
Insert and connect oil cooler hoses according to the picture.
Avoid abrasion at hoses.



Pass the runback hose of oil cooler and connect it to the oil cooler.
Fix hose with hose clamps.
Make sure, that there is abrasion at the cable harness.

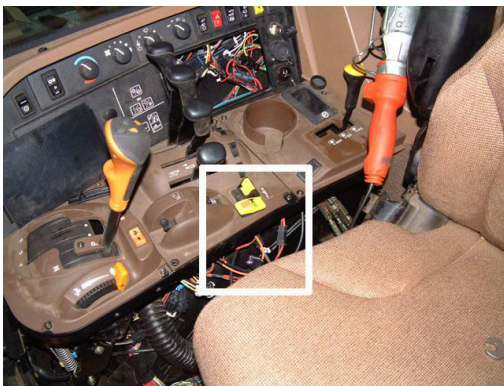


Tighten the screw-nipple to the gearing of the front PTO.
Put hose of oil cooler from pressure connection „P“ towards the oil cooler and connect it.
Fix hose with hose clamp.
Avoid abrasion at cable harness!

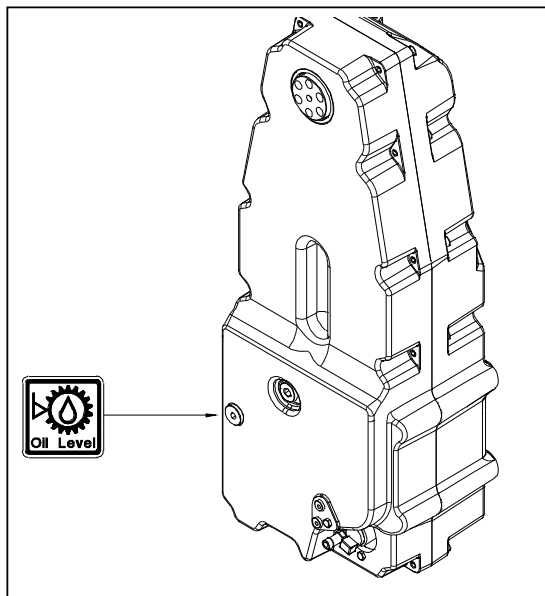


The Switch-on deceleration relay can be mounted to the radiator protection on the right side of the tractor by using two bolts M5 x 30 and nuts. Put the cable harness to the magnet valve of the PTO and connect it.

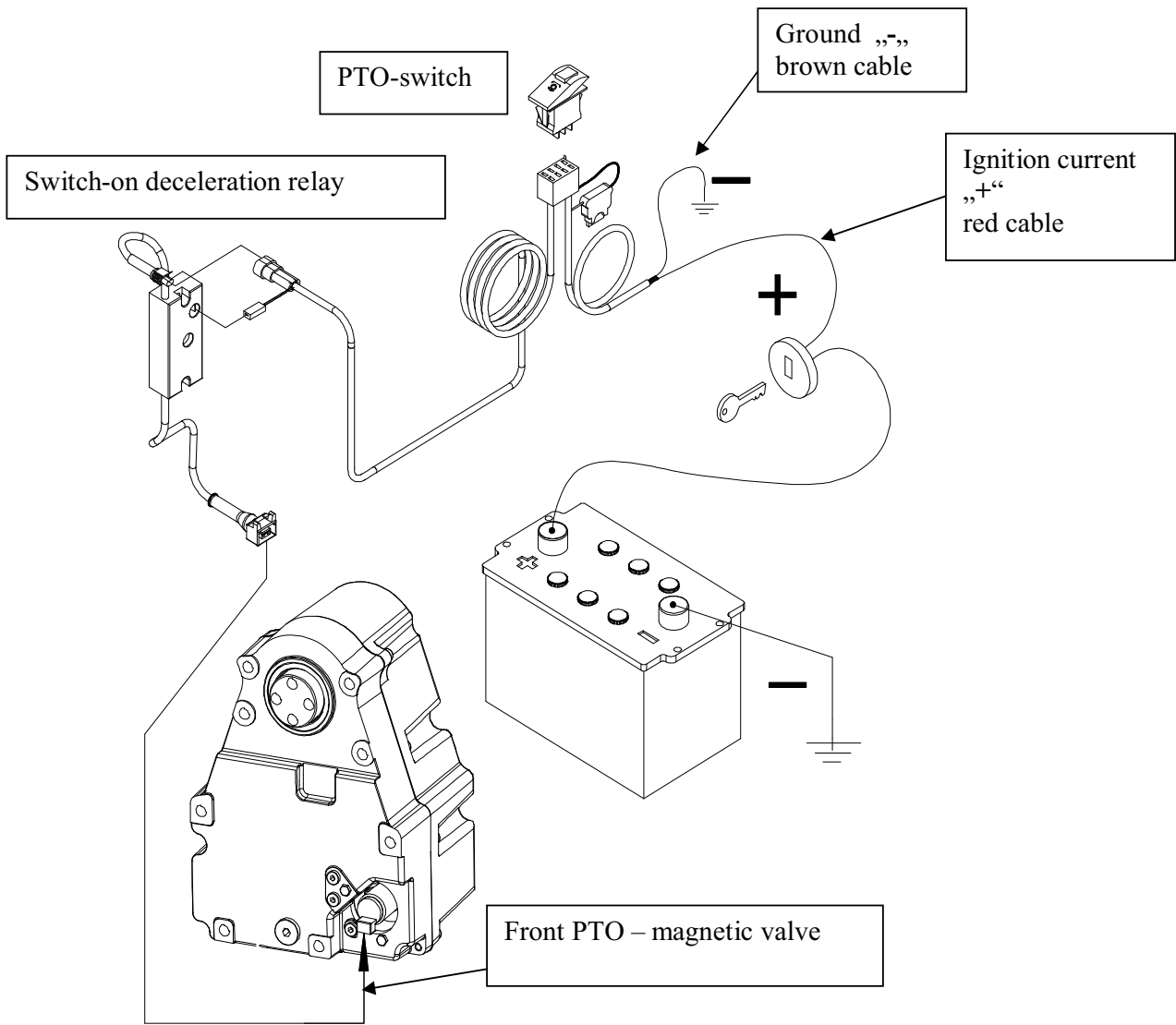
Make sure, that there is no abrasion at the cable



Mount PTO switch at a suitable place. Connect cable harness for the switching of PTO according to the wire diagram on the following pages. Put wiring in towards the front, and make sure, that there is no abrasion at the cables.



Check oil level and top up if necessary!



**Startbeveiliging–Start Protection
Startsicherung.**

T0='ON'

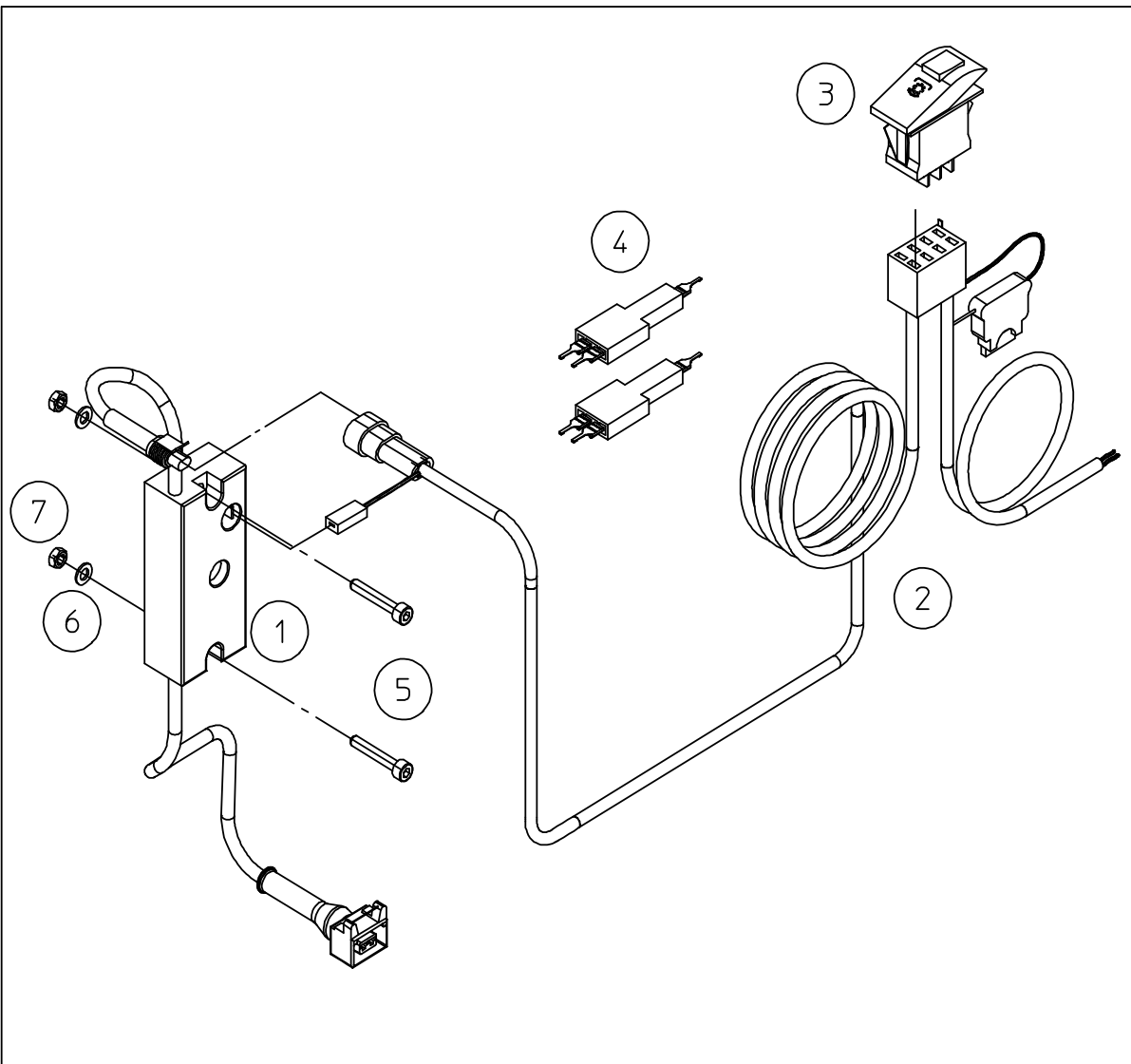
**T2–T3
(2–6 sec)
Instellen
Adjusting
Einstellen
Regler**

T0 = 'ON'

T0-T1:
Filling Pulse
(clutch)

T1-T2:
Filling up
clutch

T2-T3:
Engaging Time
PTO



Pos.	Indication:
1	Switch-on deceleration relay
2	Cable harness for cabin
3	PTO - switch
4	U-connector
5	Bolt M5 x 30 with nut
6	Washer M5
7	Screw nut M5